

Answers: [5.2.1.7 Lab – Install Windows 8](#)

Introduction

In this lab, you will install Windows 8.1 and 8.0.

Recommended Equipment

- A computer with a blank hard disk drive
- Windows 8.1 and 8.0 installation DVD or USB flash drive

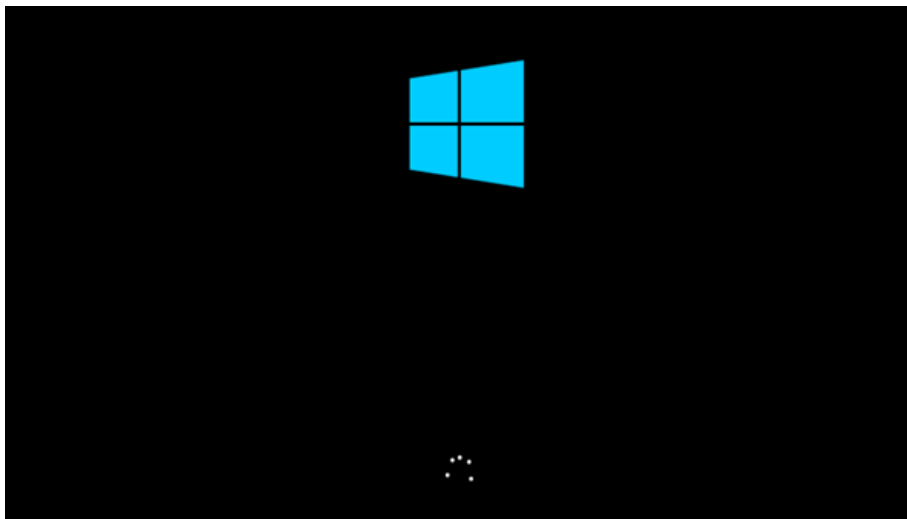
Step 1: Starting the Installation Media

- Insert the Windows 8 installation DVD into the DVD-ROM drive or plug the USB flash drive into a USB port.
- When the computer starts up, watch for the message **Press any key to boot from CD or DVD.**

If the message appears, press any key on the keyboard to boot the computer from the DVD. If the **press any key message** does not appear, the computer automatically starts loading files from the DVD.

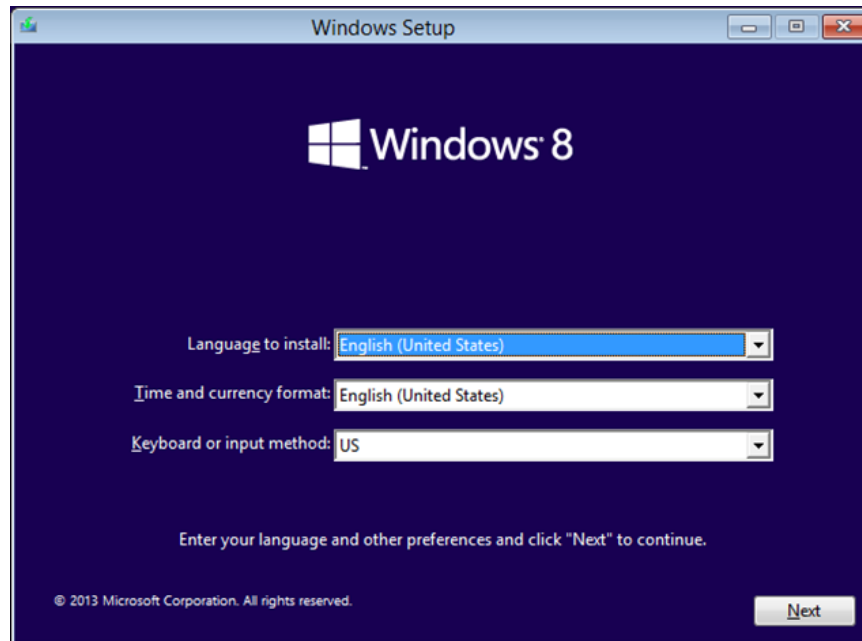
Press any key to boot from CD or DVD..._

- The computer starts loading files from the DVD or USB flash drive.

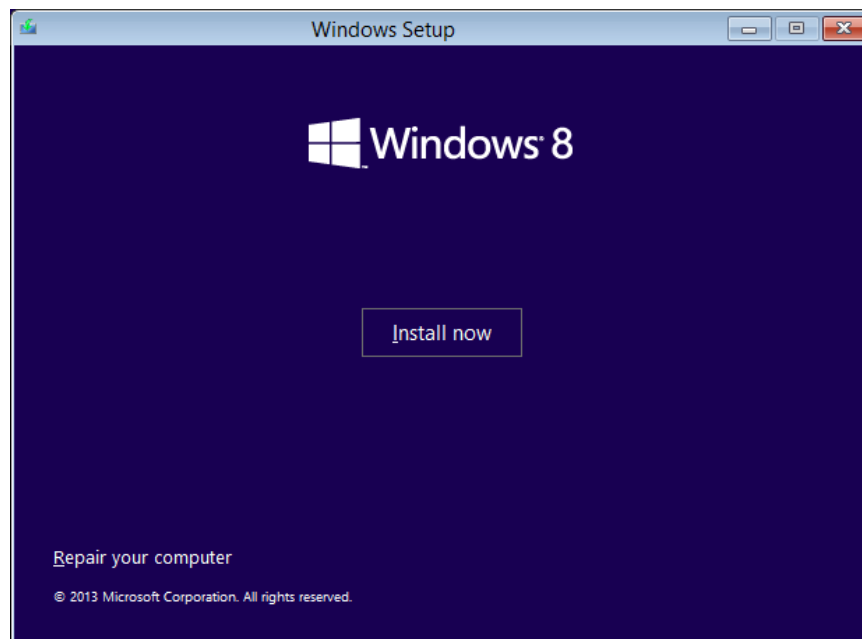


Step 2: Configuring Initial settings

- a. The **Windows Setup** window opens. Click **Next** to continue unless you need to change the default settings.

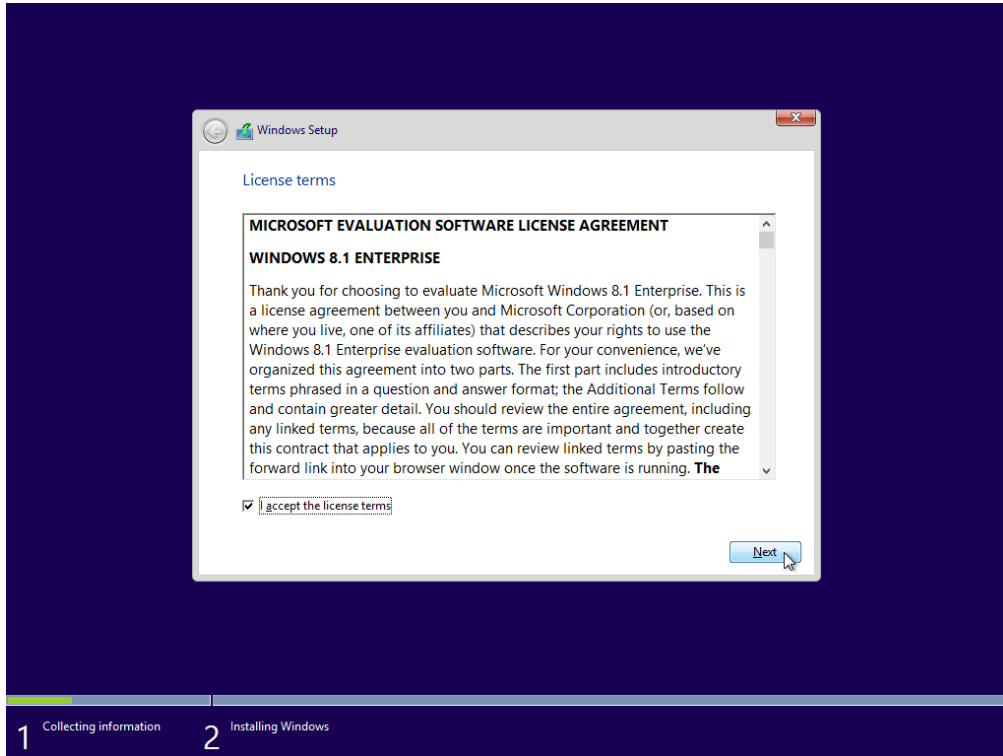


- b. Click **Install now** to continue the installation.

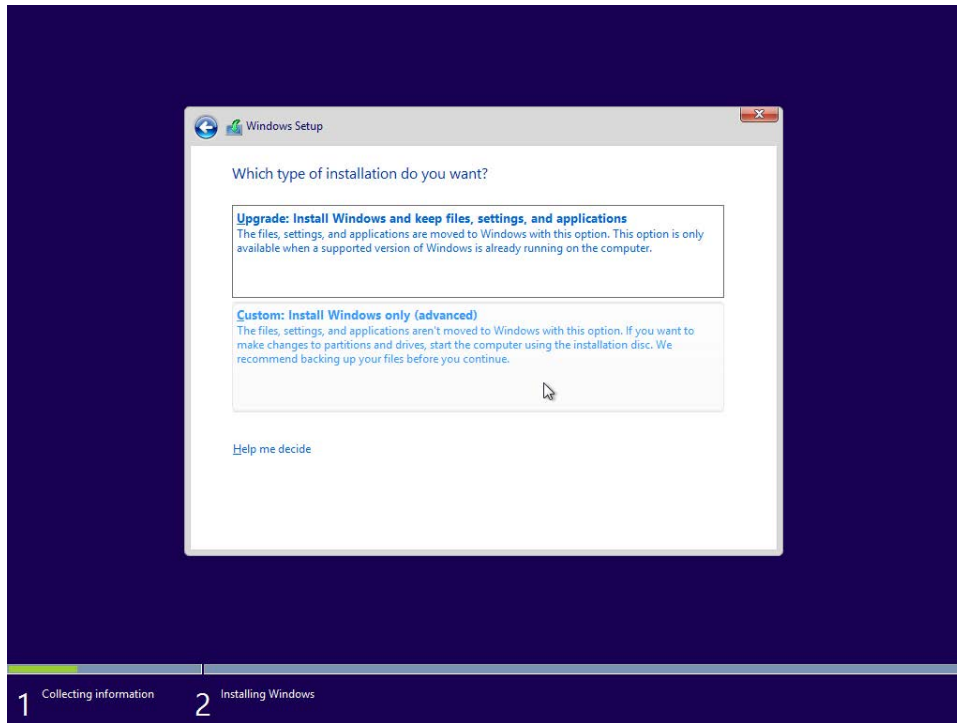


Step 3: Collecting Information

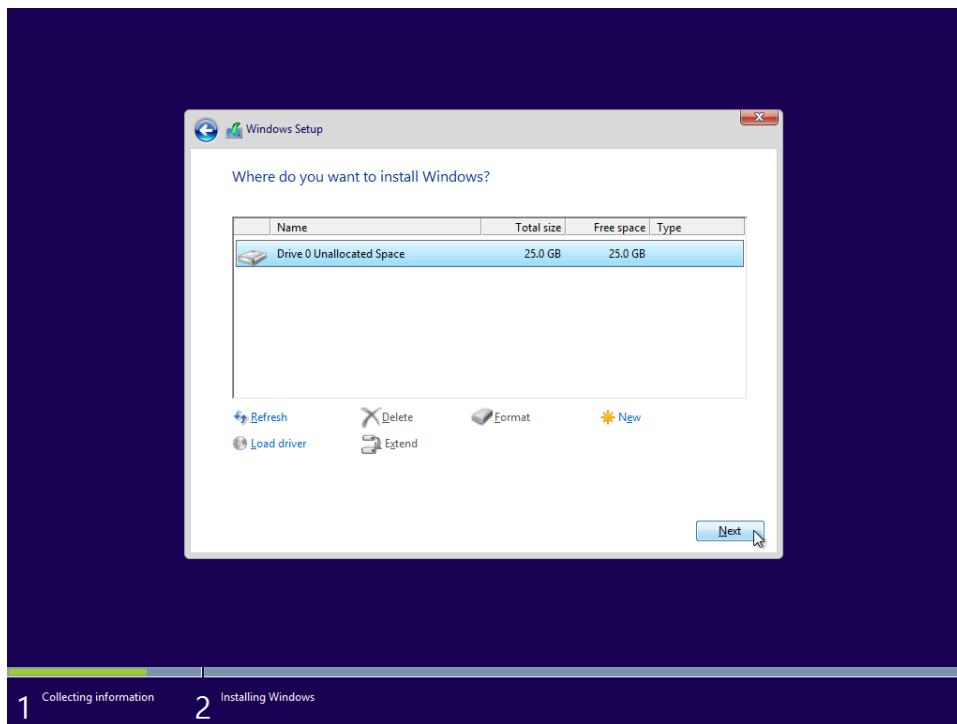
- a. In the **Enter the product key to activate Windows** window, enter the product key.
Note: You can find the product key on the case or sleeve in which the Windows DVD was packaged, or you can get it from your instructor.
- b. The **License terms** window opens. Read and confirm that you accept the license by selecting the box **I accept the license terms**. Click **Next**.



- c. The **Which type of installation do you want?** window opens. Click **Custom: Install Windows only (advanced)**.

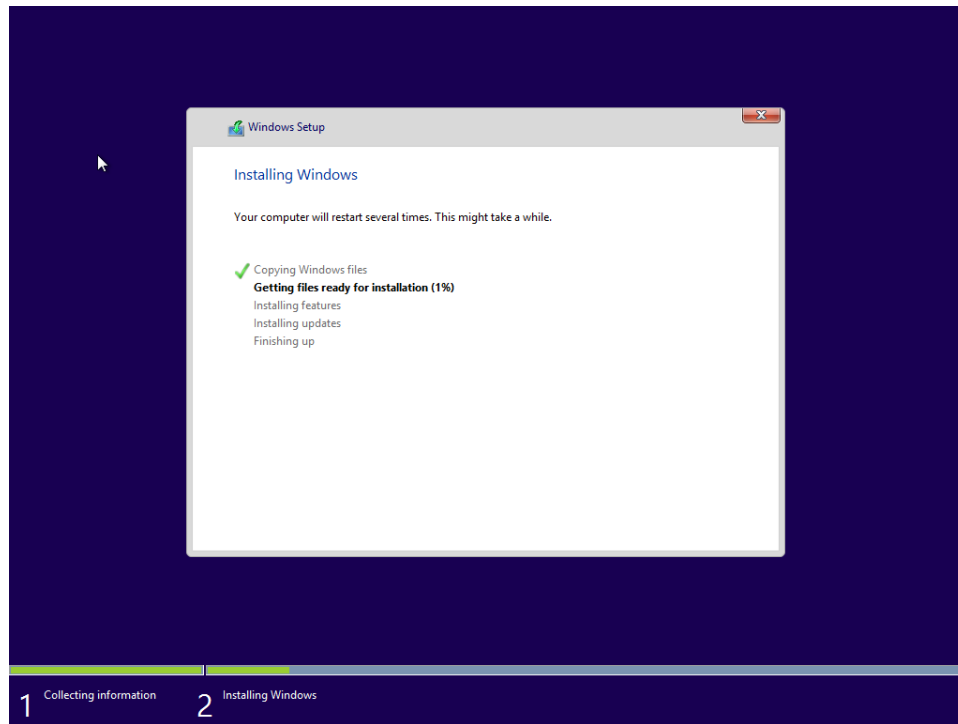


- d. The **Where do you want to install Windows?** window opens. Select the hard drive or partition on which Windows 8 will be installed. In this example, click to select **Disk 0 Unallocated Space**. Click **Next** to continue. Setup has finished collecting information for the installation.

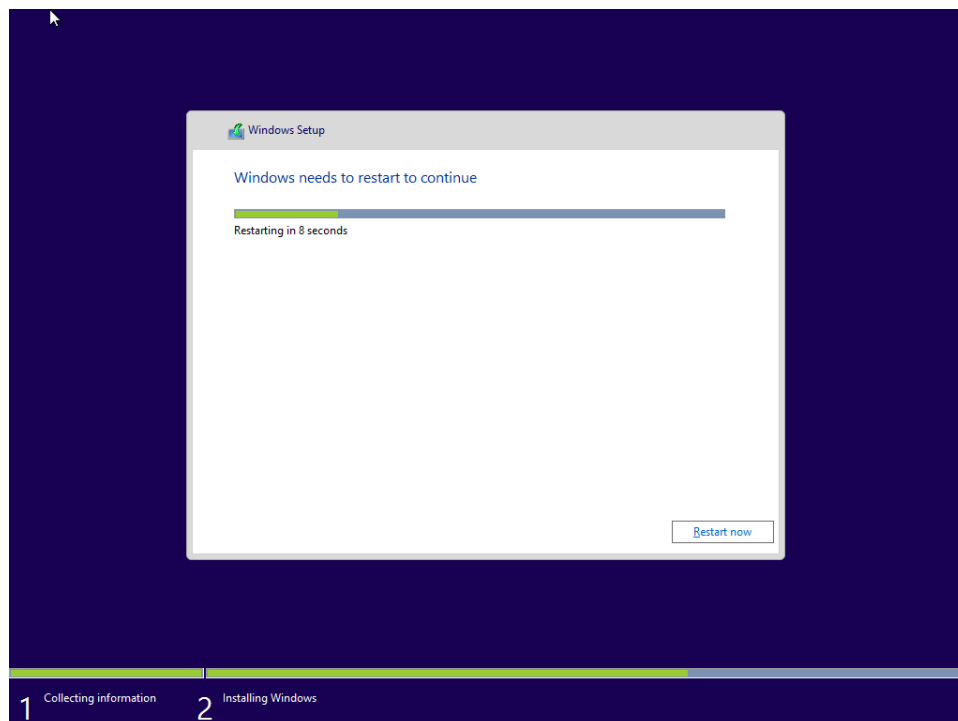


Step 4: Installing Windows

- a. The **Installing Windows** window opens. Windows 8 will take some time to copy the files and install the OS on your computer. During the setup, the computer will restart several times.

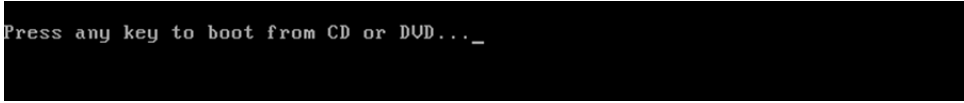


- b. When the **Windows needs to restart to continue** window opens, your computer will automatically restart or you can click **Restart now**.



Lab – Install Windows 8

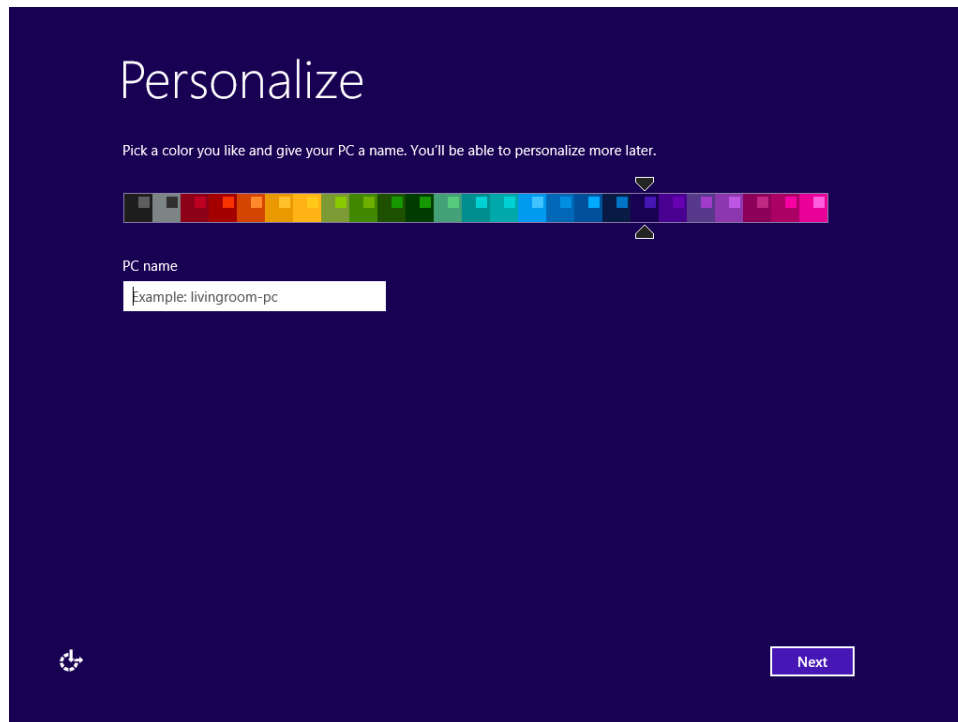
- c. If you get the message **Press any key to boot from CD or DVD...**, do not press any key and Windows will boot from the hard disk to continue the installation.



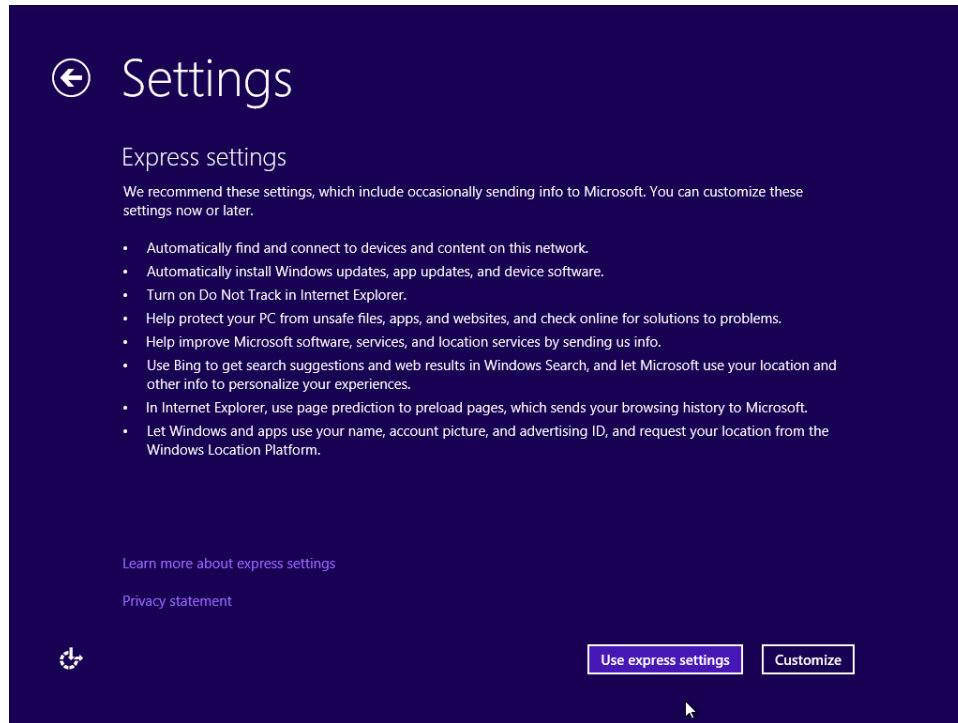
Press any key to boot from CD or DVD..._

Step 5: Personalize your Windows Installation

- a. After the devices setup is complete and Windows is ready for more customization, the **Personalize** screen displays. Enter the name of this PC in the **PC name** field. Click **Next** to continue.



- b. The **Settings** screen displays. At this screen, you can click **Customize** to configure the settings, such as Windows Update, according to your preference. In this lab, click **Use express settings** to continue.

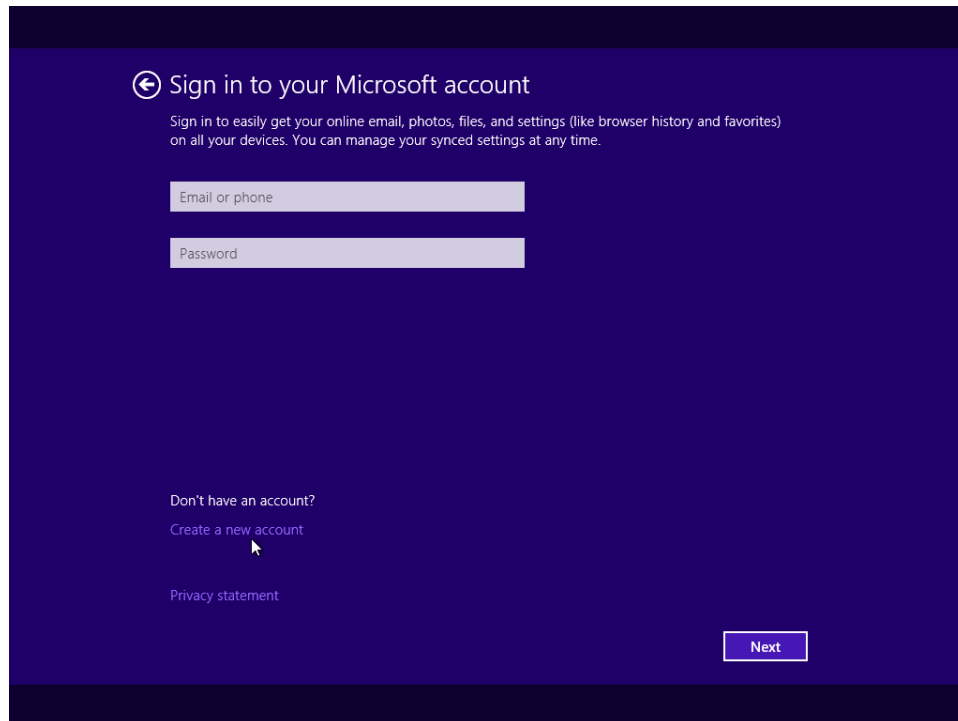


Step 6: Account Setup

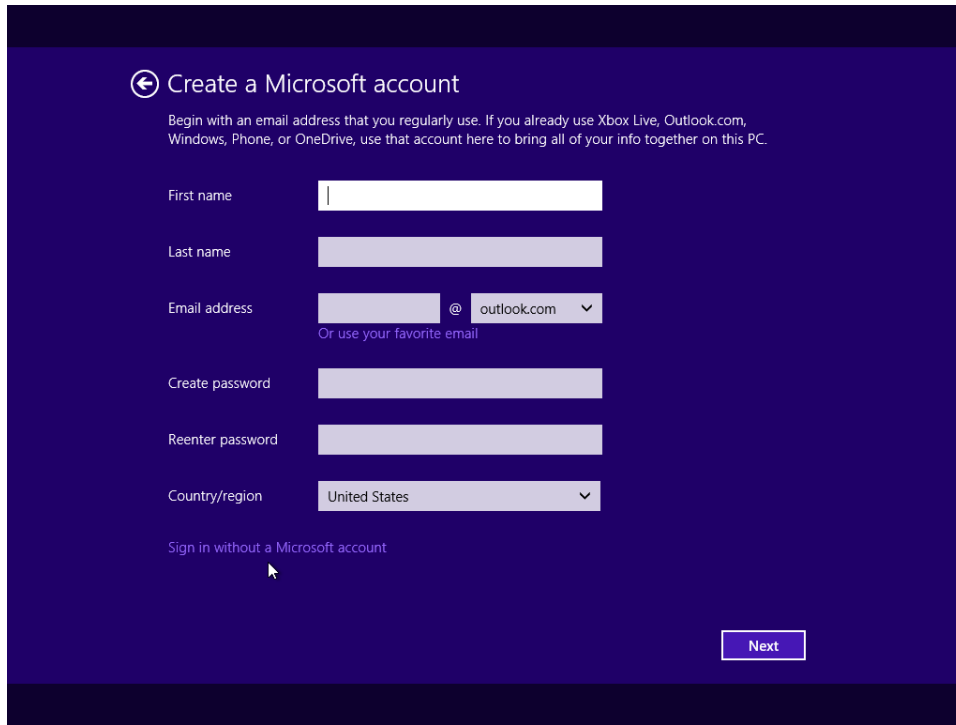
In this step, you will set up a local account to access the computer. You will not be creating a Microsoft account for this exercise. If you already have an account or choose to do so, you may use your Microsoft account for this step.

- a. When the **Sign in to your Microsoft account** screen displays for Window 8.1 installation, click **Create a new account** to continue. If you already have a Microsoft account and choose to use it, enter the required information and click **Next** to continue.

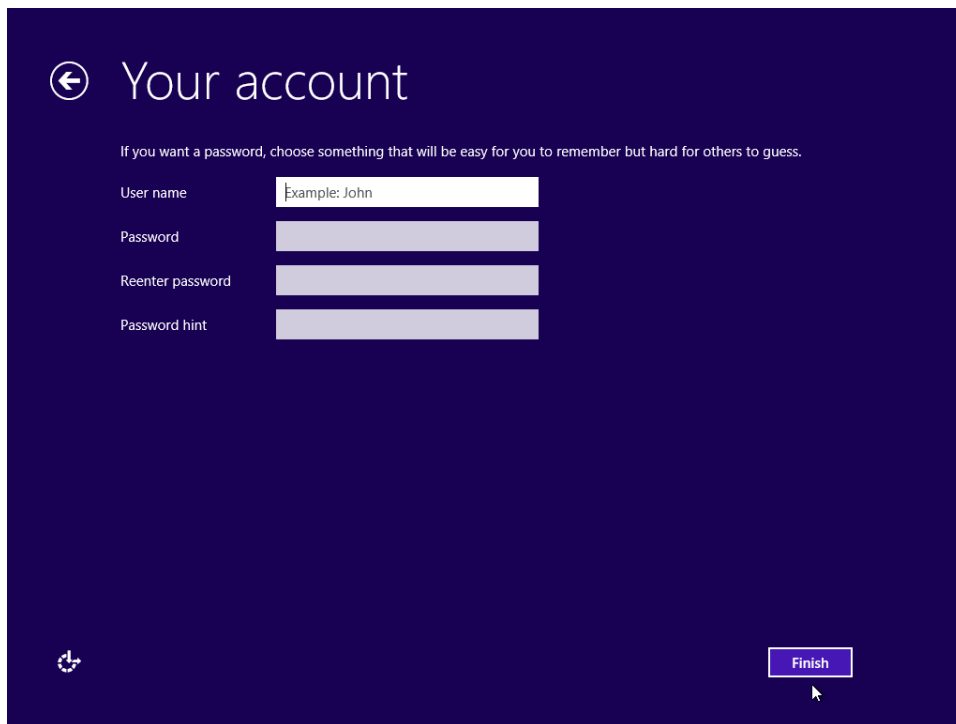
For **Window 8.0 installation**, click **Sign in without a Microsoft account**. Click **Local account** to continue and skip to step c.



- b. On the **Create a Microsoft account** screen, do not fill in the information. Click **Sign in without a Microsoft account** to continue.

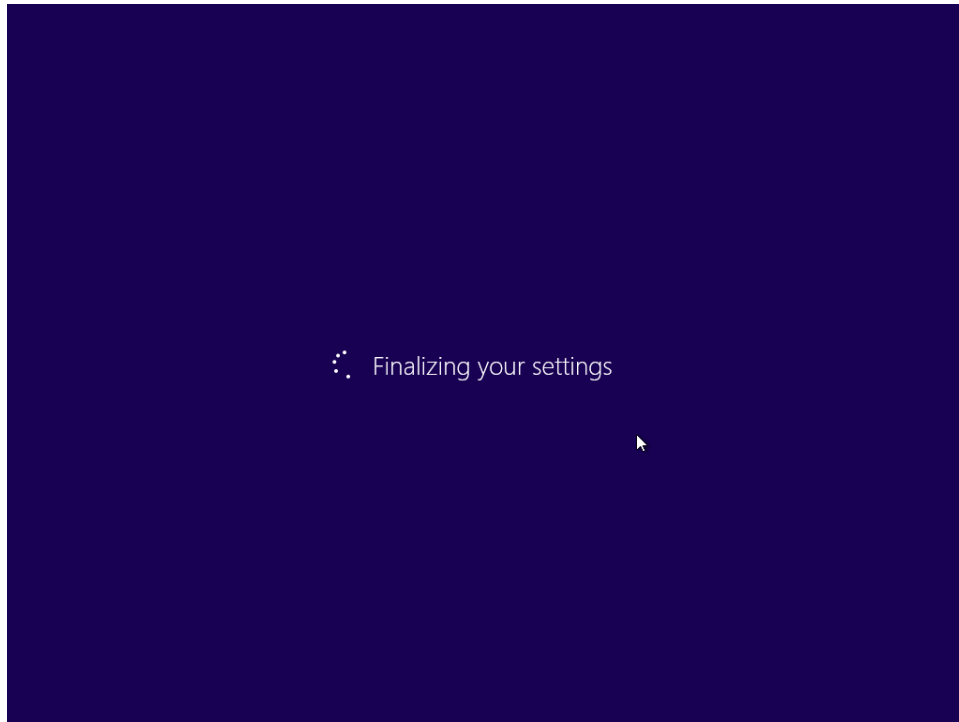


- c. On the **Your account** screen, enter a username. Enter a password and a password hint provided by your instructor. It is highly recommended to create a password to protect your user account and data. Click **Finish** to continue.



Step 7: Finishing the Installation

- a. When you are finished with the installation, Windows continues to finalize your settings and install your apps.



Lab – Install Windows 8

- b. After the installation is completed, the Desktop displays and you are logged into Windows for the first time.

For Windows 8.0, the **Start** screen displays when you are logged in for the first time.

